

TACTICAL COMBAT CASUALTY CARE (TCCC/EMS) CUT SUIT

The main goals of Tactical Combat Casualty Care (TCCC) are to treat the casualty, prevent additional casualties, and complete the mission. The TCCC Cut Suit is specially suited to accomplish these goals in training. It allows medical providers to treat the three primary causes of death on the battlefield on a live human casualty; uncontrollable hemorrhage, airway compromise, and tension pneumothorax. The frame has been streamlined to minimize the wearer profile, increasing the Hyper-Realism of any training scenario. The TCCC Cut Suit is completely user-customizable and user-repairable, minimizing costly repairs and long term reoccurring costs.



Features unique to the TCCC Cut Suit

- The system can be worn during even intensely physical scenarios at the Point of Injury (POI)
- The system weighs approximately 20 lbs
- Clothing, uniform, body armor, and equipment is usable
- The system allows for interaction with a live human during the emergency assessment and treatment process
- The skin is user repairable
- User created and customizable wounds

Procedures currently available on the TCCC Cut Suit

- Extremity hemorrhage control with tourniquet application, arterial ligation / clamping, internal compression (wound-void packing)
- Surgical Cricothyroidotomy
- Bilateral anterior and axillary chest needle thoracocentesis
- Bilateral surgical chest-tube thoracotomy
- Suturing and stapling of skin
- Peripheral IV access
- Sternal intraosseous IV access
- Peripheral IV medication administration



TACTICAL COMBAT CASUALTY CARE (TCCC/EMS) CUT SUIT



Field Expedient Cricothyroidotomy



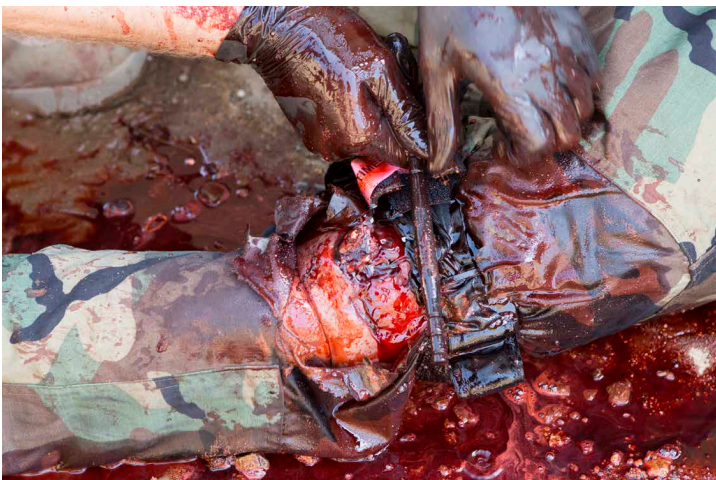
Chest Needle Thoracentesis



Occlusive Dressing



Chest Tube



Hemorrhage Control - Arm



Hemorrhage Control - Leg